

**V E N T U R E   A R T S**



S H I E L A   B I R D   S T U D I O

Workshop Feedback



Tom Selledo magnum Pi

John Wayne

Billy the Kid  
yee haa

Corona in information

Welcome back to the U.S.A.

cheat a living!

We are from America where (S) go at camera my back!

Tea  
Buck my coffee

Redskins sitting Bull

We are from America where (S) go at camera my back!

# Hello Venture Arts

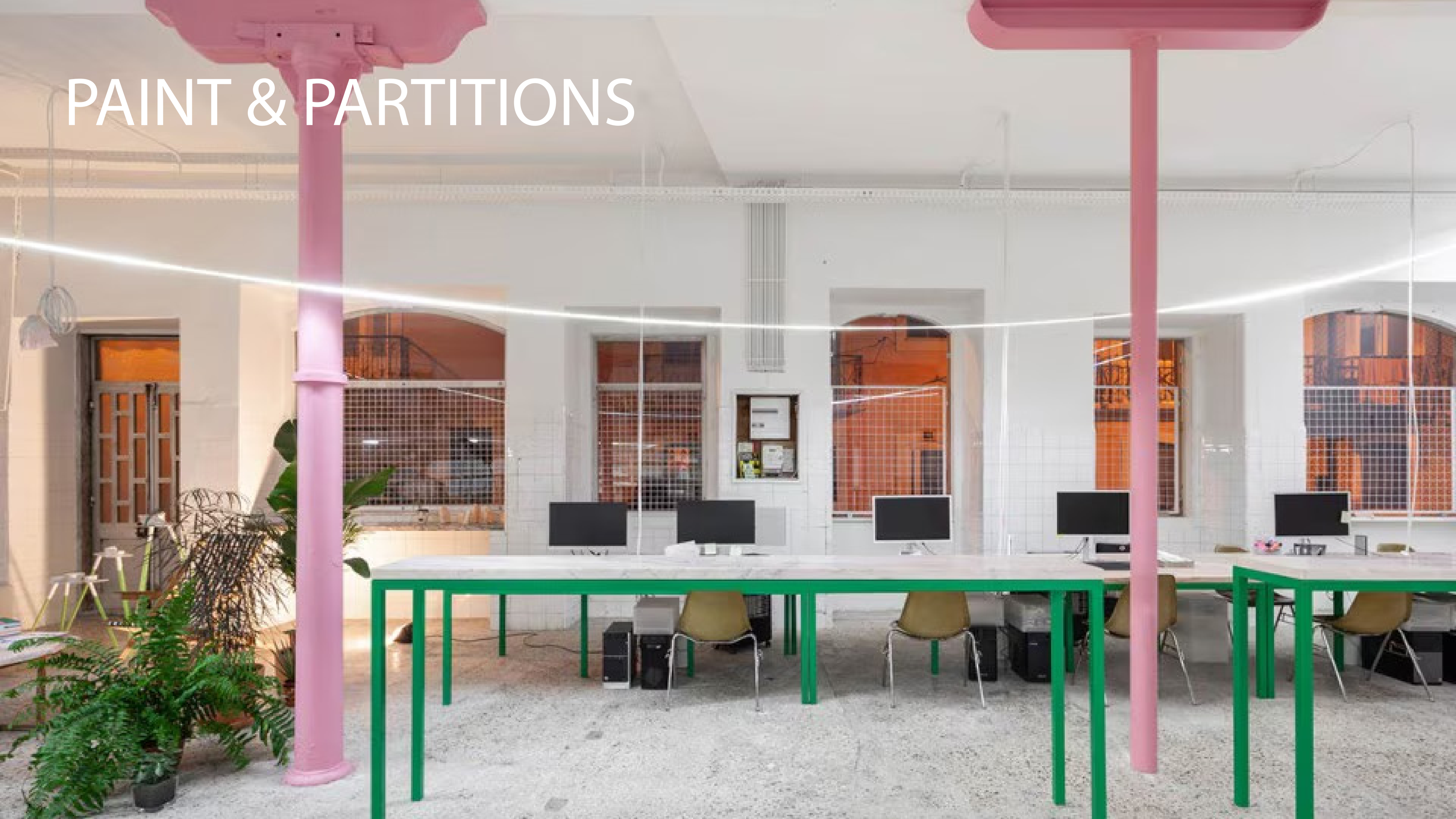
It's delightful to be working with Venture Arts to explore options of how we can make your existing space better accommodating for you all.

This document explains what we are doing to your home and why.



# SETTING THE TONE

# PAINT & PARTITIONS



# Defining details



Defining door edges and door frames with colour is an important part of enabling people to understand where they are.

# Practical partitions



Adding translucent and movable partitions to create smaller studio spaces with in the large open plan footprint

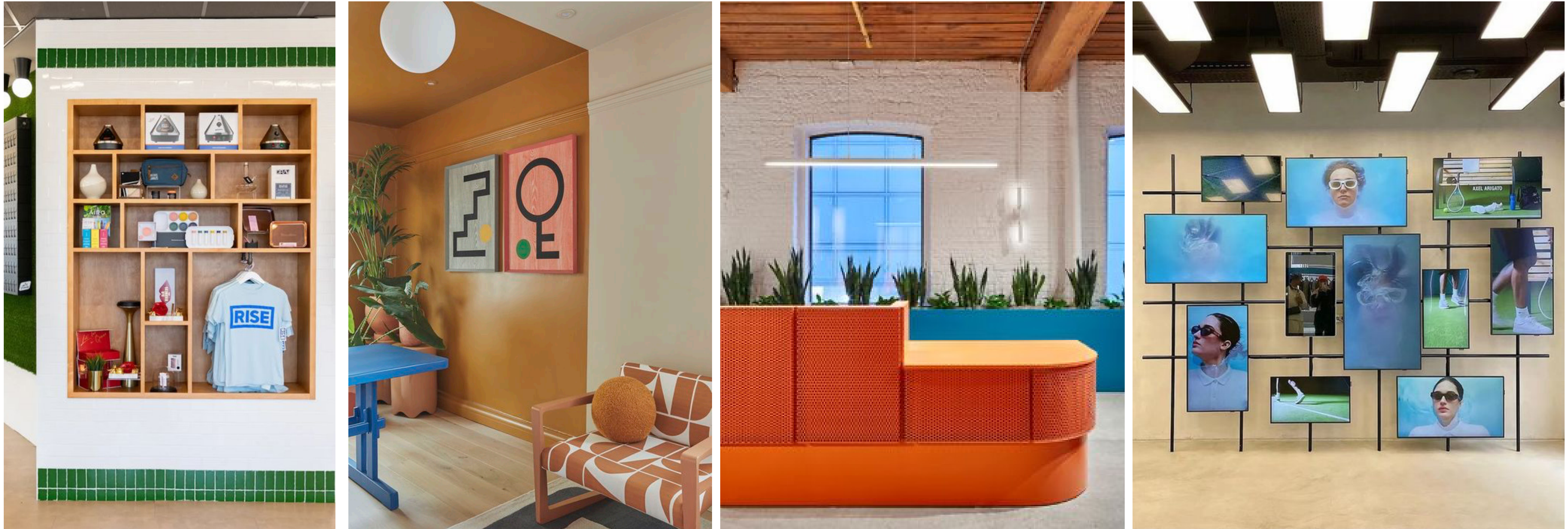
The reception desk could be populated with drawings and words created by the artists

# WELCOME TO VENTURE ARTS





# A warm welcome



A warm welcoming entrance, designed to enhance visitor and artist experience. The space includes an accessible reception desk clad with tiles designed by Venture arts own artists, display areas for showcasing merchandise and a combination of static artwork and rotating media adding visual interest to the space.



view of the reception area showing the tiled reception desk and digital wall

# YOUR STUDIO



# Storage solutions



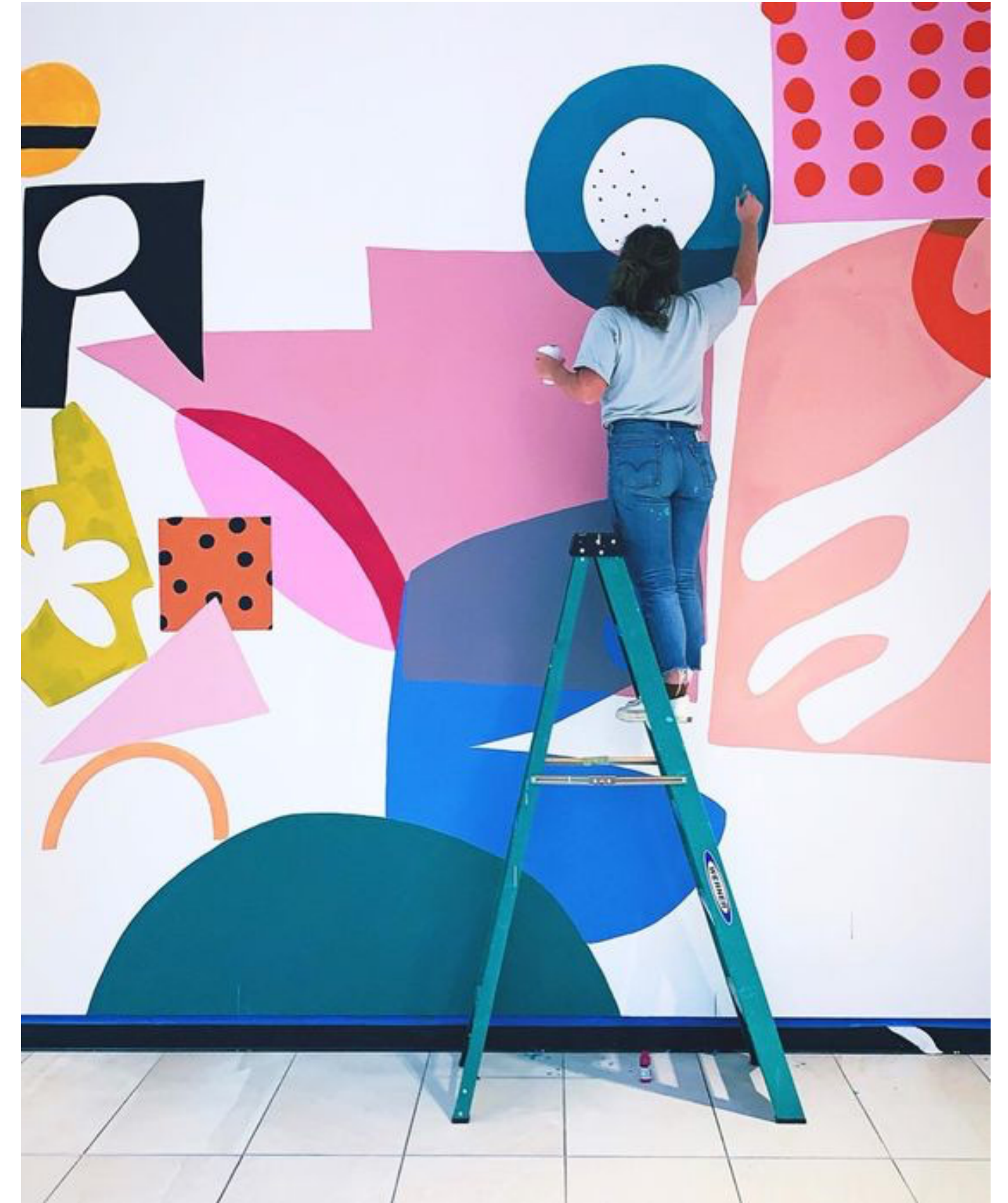
Using colour in selected areas to define purpose

# Smart shelving



Shelves crafted from natural materials that enhance the space's colour palette, and designed with adjustable heights to maximise functionality and adaptability.

# Creative corners



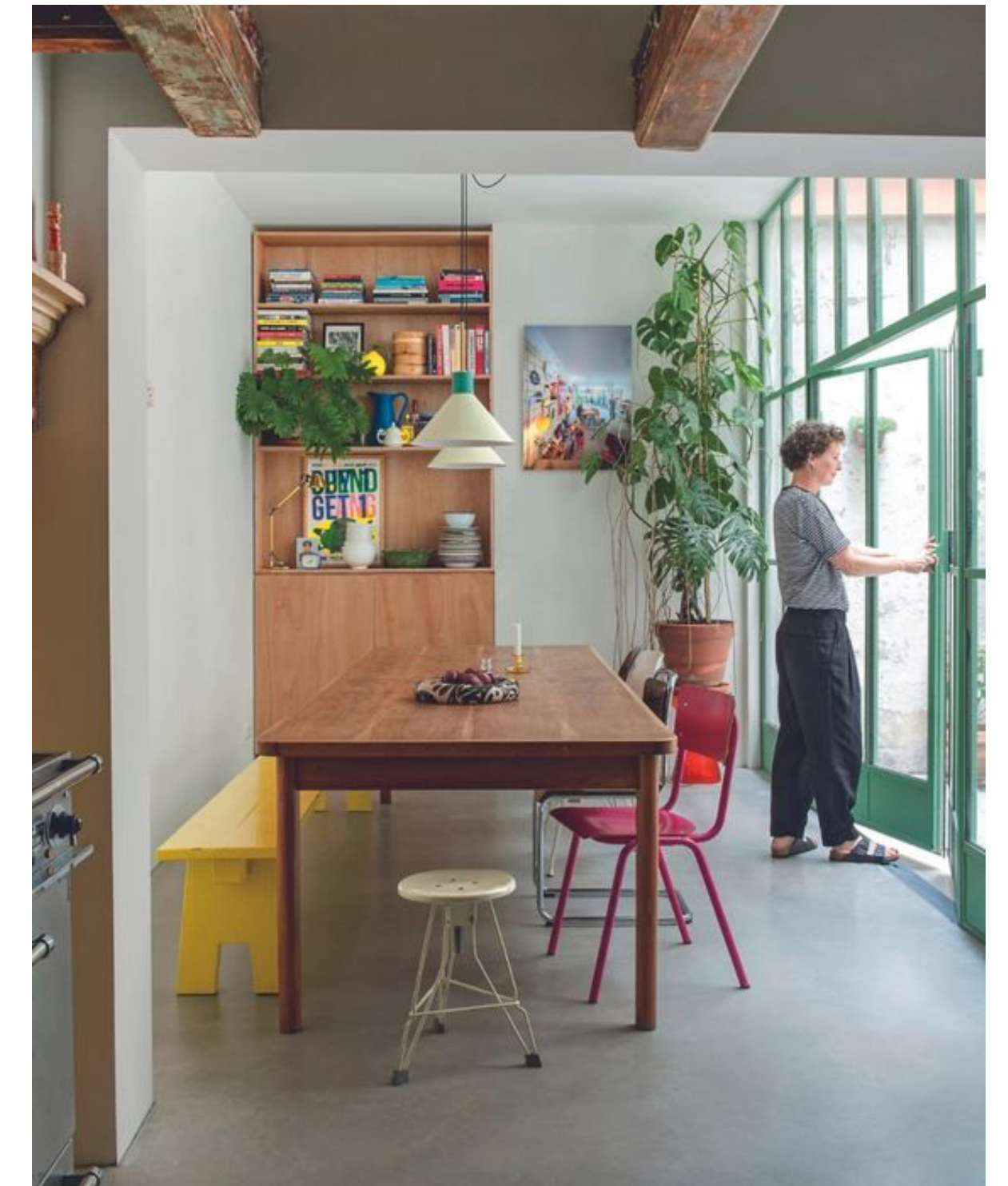
Artist work featured on walls, windows, floors and ceilings in carefully selected corners throughout the space.

# Perimeter perfection



Moments to store, sit and work along the perimeter of the building

# Functional furniture



Fun, functional furniture suitable for use throughout the space. This includes height adjustable, foldable and stackable furniture.





view into studio 1 and window seats showing in the distant studio 2

# Clay cove



Height adjustable shelving, mobile trolleys, tool walls and functional lighting, making the space fully equipped for full day of creating wonderful ceramics.



coloured peg-board walls could be used to define different zones

# Mindful meeting



Private spaces for quiet moments and meetings. Acoustic treatment to ceilings and walls, ample greenery, soft lighting and harmonious colour tones.

# Contrasting colours



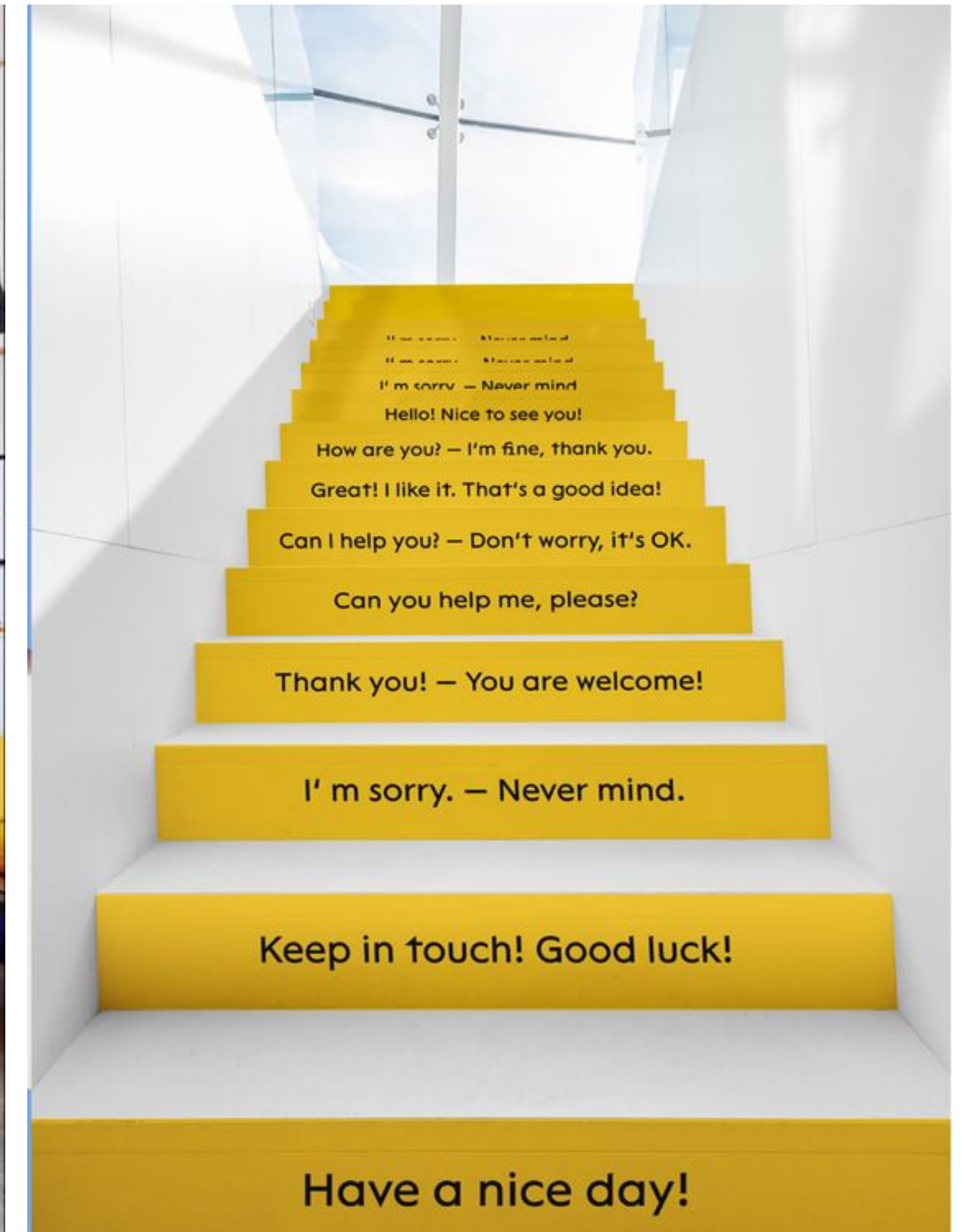
A moment to celebrate building regs. Lets make the WC's exciting, playful and functional with contrasting DDA fixtures, datum height tiling and feature paint colours.

# Bright breakout



A playful space to take a break, make a brew and enjoy lunch. Combining functional elements like recycling points, plenty of storage and essential kitchen amenities.

# Colourful climb



An elevated gallery space, taking advantage of the natural light beaming in from the full height windows. An opportunity to get all artists involved in creating a wonderful piece of art.



view of the gallery leading up to the first floor

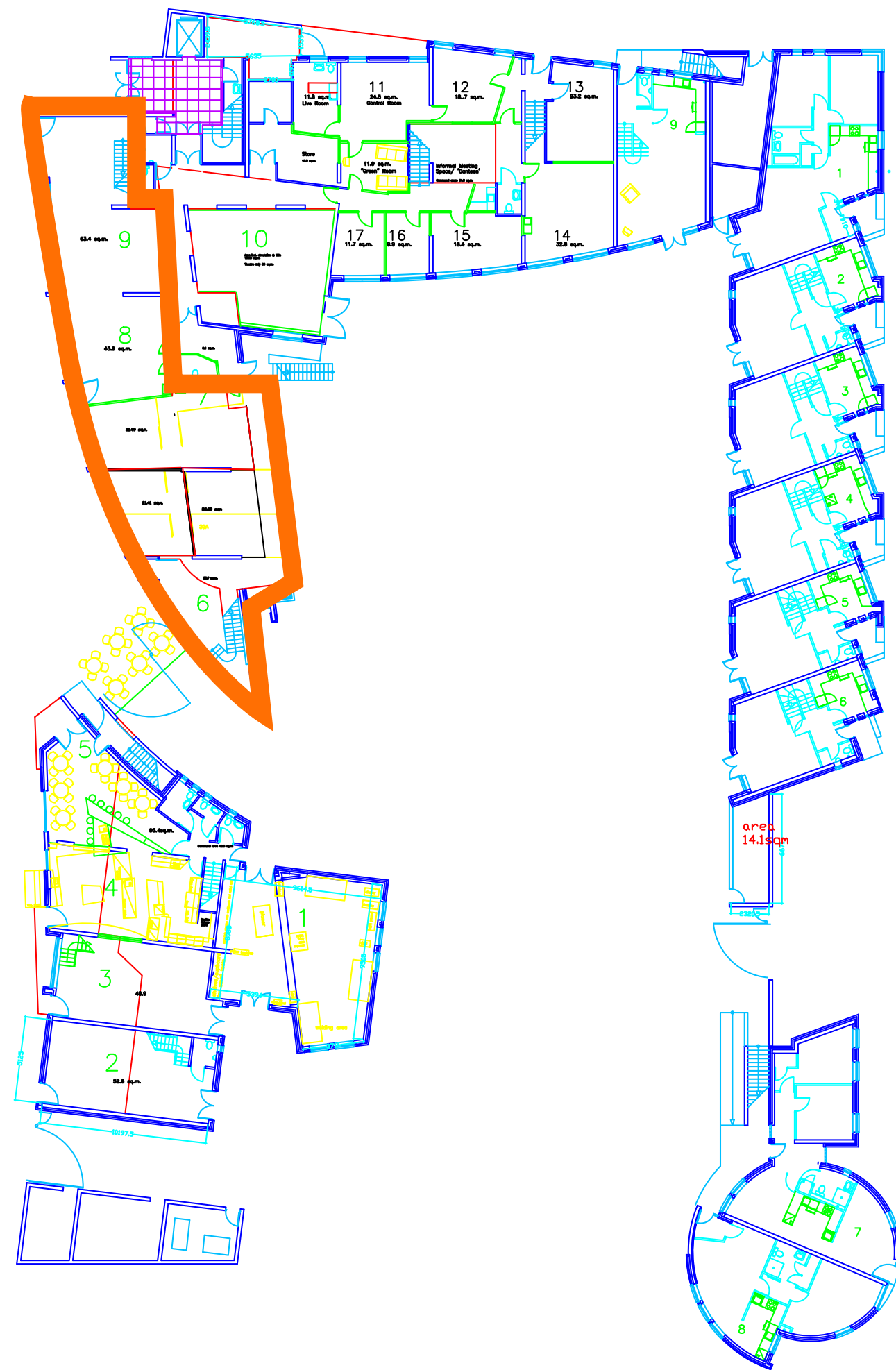


# HATCHING A PLAN





# GROUND FLOOR



# FIRST FLOOR

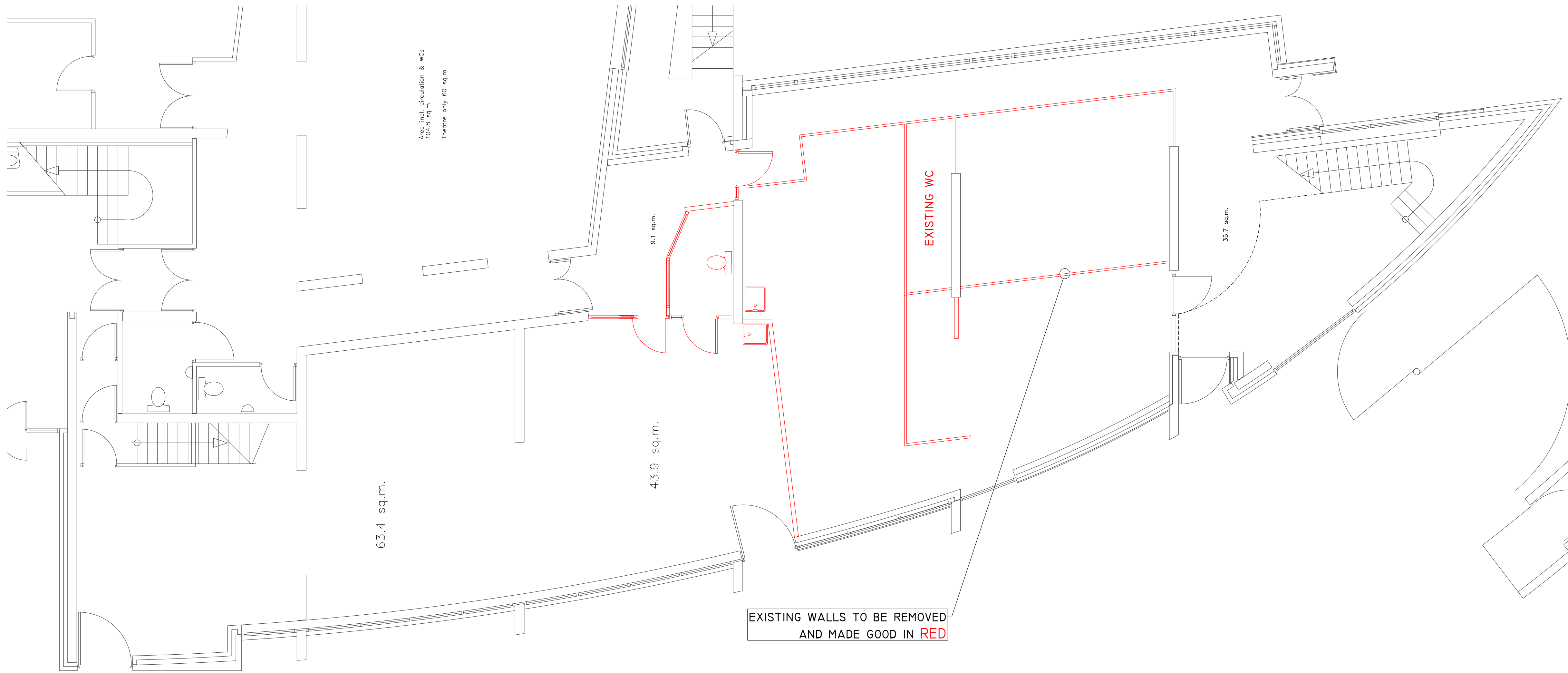


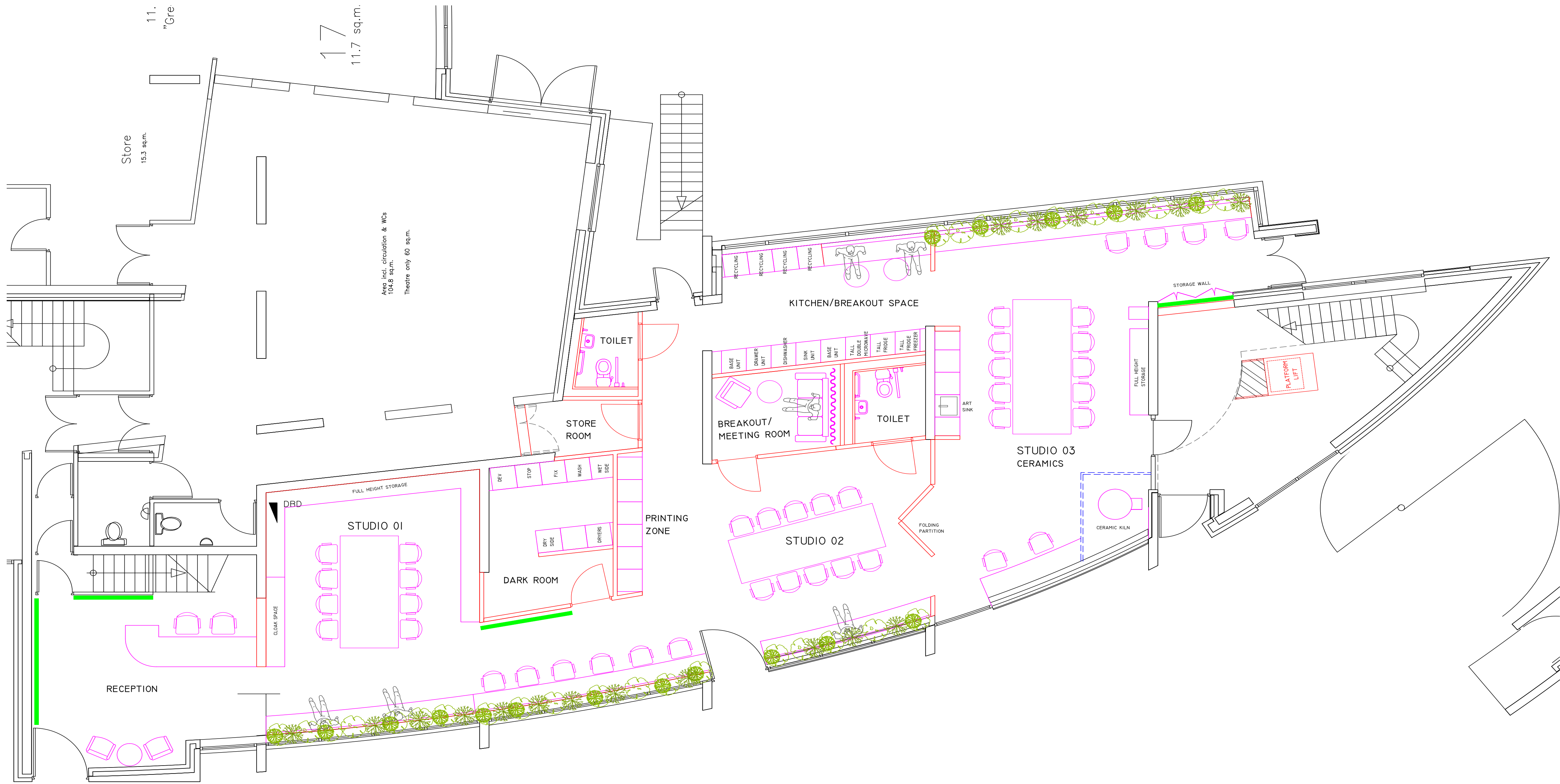
DEMISE

Location plan





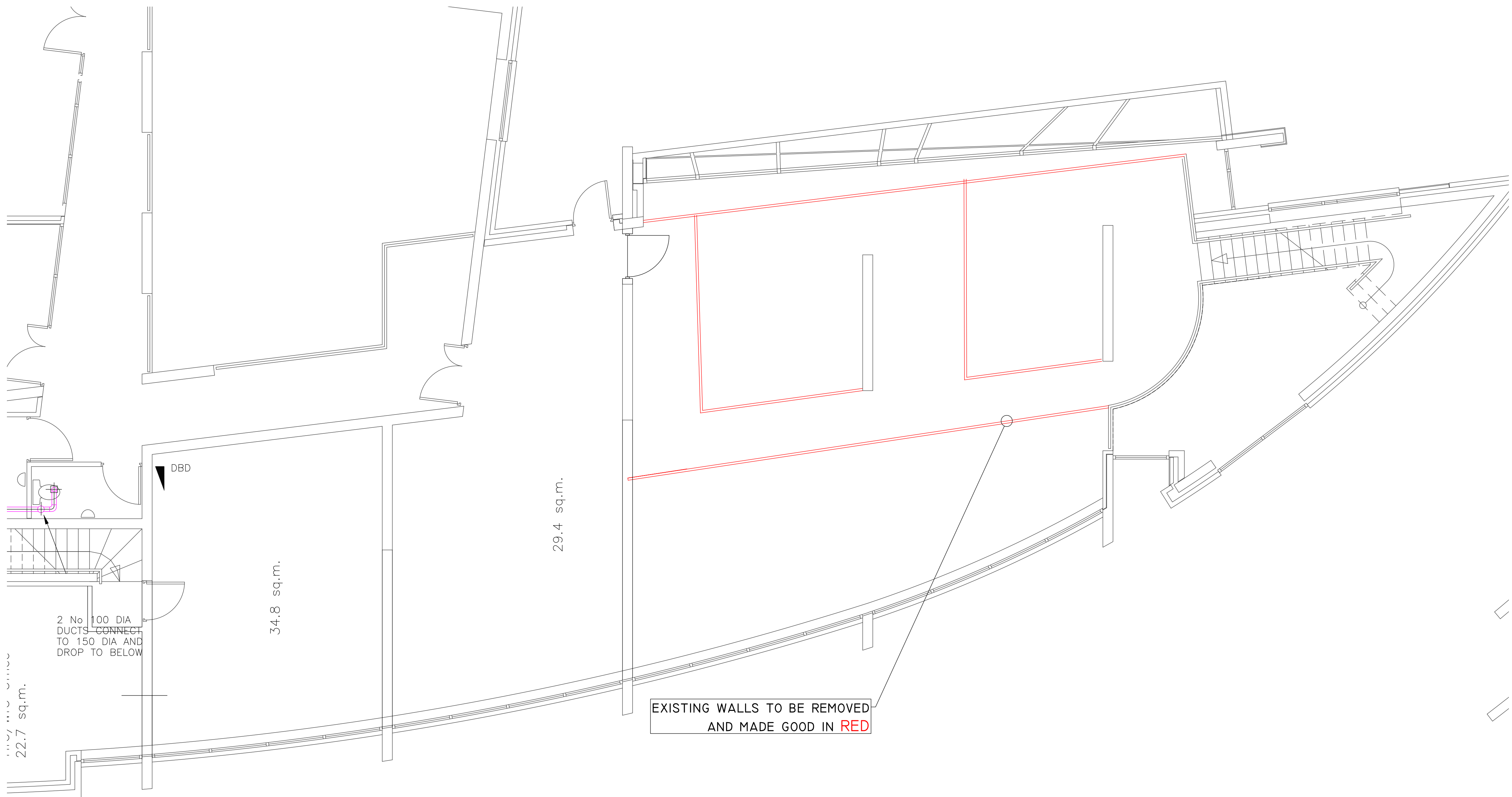




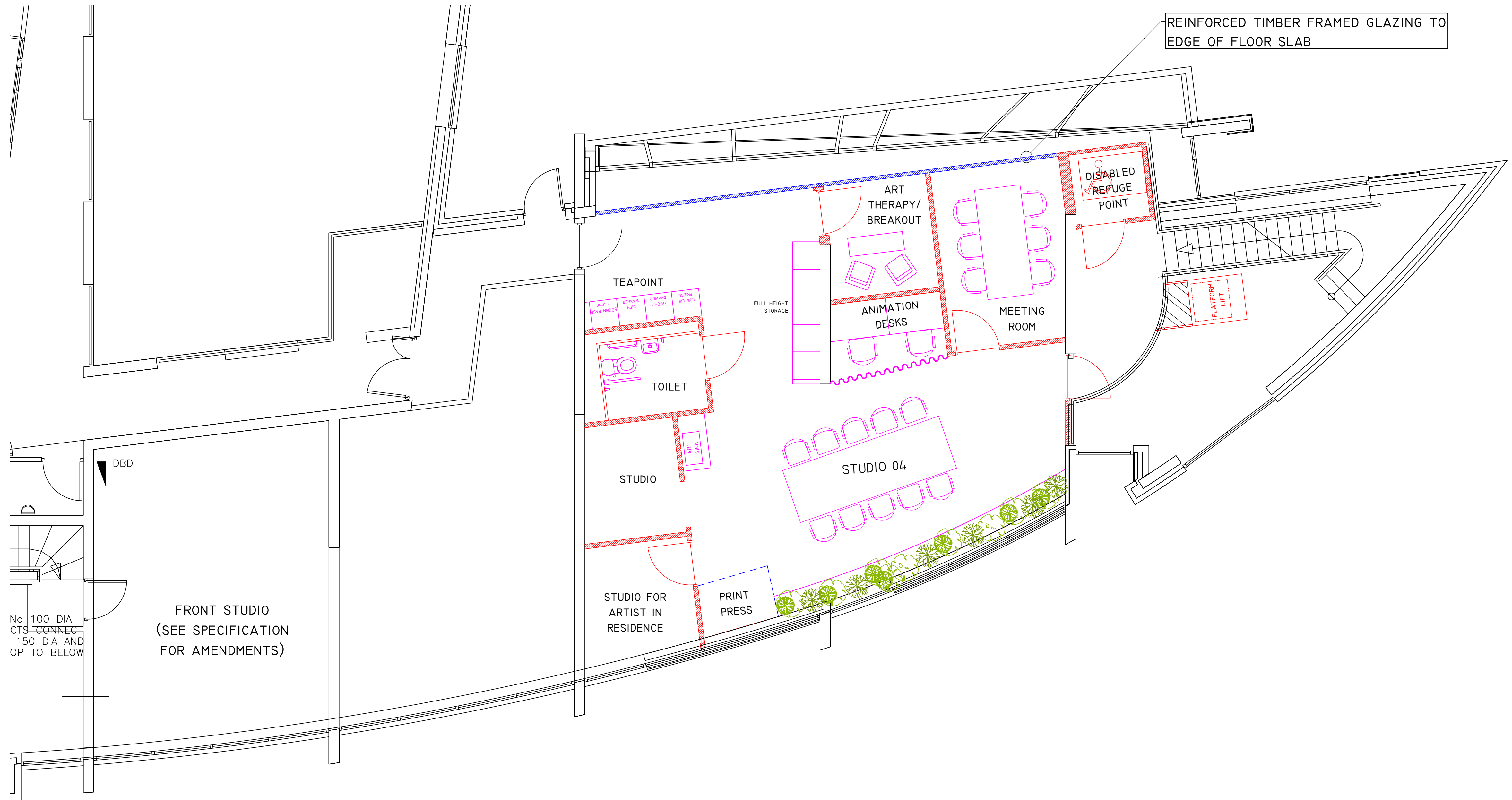








EXISTING WALLS TO BE REMOVED  
AND MADE GOOD IN RED



THANKYOU



Leslie Thompson The Great Superstar Drawer Artist Cartoonist